



FOR IMMEDIATE RELEASE

DATE: April 10, 2012

FOR MORE INFO: Claire Leffler, Esse Health, cleffler@essehealth.com or 314.851.1053

NEWS RELEASE

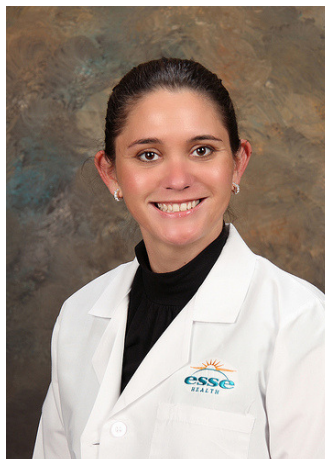
Esse Health Adds Three Nurse Practitioners for Intensive Outpatient Care Program

ST. LOUIS – St. Louis-based physician group [Esse Health](#) welcomes three board-certified nurse practitioners to provide health care services for patients enrolled in the company's Intensive Outpatient Care Program (IOCP).

Marsha Callender, ANP, Kieran Quigley, FNP-BC, and Eileen Steiniger, ANP-BC, will partner with Esse Health internal medicine physicians and offices to care for patients who work full-time and need more personal care, more often. Callender, Quigley and Steiniger will meet with these patients one-on-one and maintain a relationship with them over the three-year program through in-person, phone and email contacts. Through IOCP, the nurse practitioners will help these patients with self-management of chronic conditions.



Callender



Quigley



Steiniger

Callender graduated from the Goldfarb School of Nursing at Barnes-Jewish College in St. Louis. She has a Master of Science in Nursing and is board certified in adult medicine. She has seven years experience as a nurse practitioner with specific training in reconstructive orthopedic surgery as well as diabetes.

Quigley is a board-certified family nurse practitioner with three years of experience as a nurse practitioner and eight years as a registered nurse. She holds a Master of Science in Nursing from the University of Missouri-St. Louis. Quigley previously worked at Take Care Health, where her responsibilities included direct patient care of acute and chronic medical conditions for adults and children.

Steiniger is a board-certified adult nurse practitioner, who received a Master of Science in Nursing from the Goldfarb School of Nursing at Barnes-Jewish College in St. Louis. A member of the American College of Nurse Practitioners

and St. Louis Nurses of Advanced Practice, Steiniger previously worked at Barnes-Jewish Hospital as a critical care nurse.

Esse Health is a St. Louis-based physician group that strives to improve the overall well-being of its patients through patient education, lifestyle modification and prevention. With 31 locations throughout the St. Louis and Metro East area, Esse Health's services include asthma, allergy and immunology, family medicine, internal medicine, nutrition, pediatrics, radiology and urology. Esse Health is recognized as a leader in using technology in health care and physician accountability for both quality and cost-of-care. For more information on Esse Health, visit www.essehealth.com.